



Heluna Health<sup>®</sup>

**INSIGHTS**



---

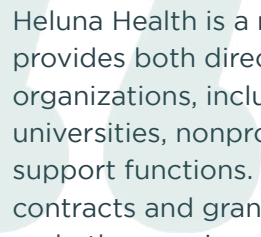
## Health Equity Impact Report

2020-2021



# Contents

<b>WELCOME</b>	4
<b>MISSION, VISION, &amp; VALUES</b>	5
<b>PROGRAMS &amp; SERVICES</b>	7
<b>SPOTLIGHT STORIES</b>	11
<b>COVID-19 TIMELINE</b>	22
<b>COMMUNITY</b>	24
Partners and Direct Service Programs	25
Investing in Health Equity	27
Leadership and Governance	30
<b>FINANCIALS</b>	32
<b>CONNECT</b>	34



Heluna Health is a nonprofit public health organization that provides both direct services and assists many partner organizations, including public health departments, universities, nonprofits, and public-private consortia with key support functions. Whether it's through the human resources, contracts and grants management, financial management, and other services we provide, we help our partners focus on what they do best, helping more people live healthy and productive lives.

Since 1969, Heluna Health has been focused on a broad range of population health issues that we cannot tackle alone. Our programs and our partner projects focus on many health topic areas, such as responding to emergent outbreaks, like the COVID-19 pandemic, communicable and chronic disease prevention, infant and maternal health, and support services for those experiencing homelessness, as well as addressing other social determinants of health, and so much more.

In addition to our partner support, Heluna Health offers a number of direct service programs. Our largest service program is called WIC, a supplemental nutrition assistance program for women, infants, and children, which reaches nearly 200,000 pregnant women, children and caregivers each year, with nutrition and breastfeeding support. We also engage in a variety of other programs that provide critical links to social services, such as early literacy support for young children and their families, community intervention, mediation, support to those impacted by gang violence, and much more. Together, we're working toward our vision of building healthy, strong communities for all.



**President and Chief Executive Officer**  
Blayne Cutler, MD, PhD

OUR MISSION

---

**Heluna Health enhances  
the health, wellness,  
and resilience of every  
community we serve**

OUR VISION

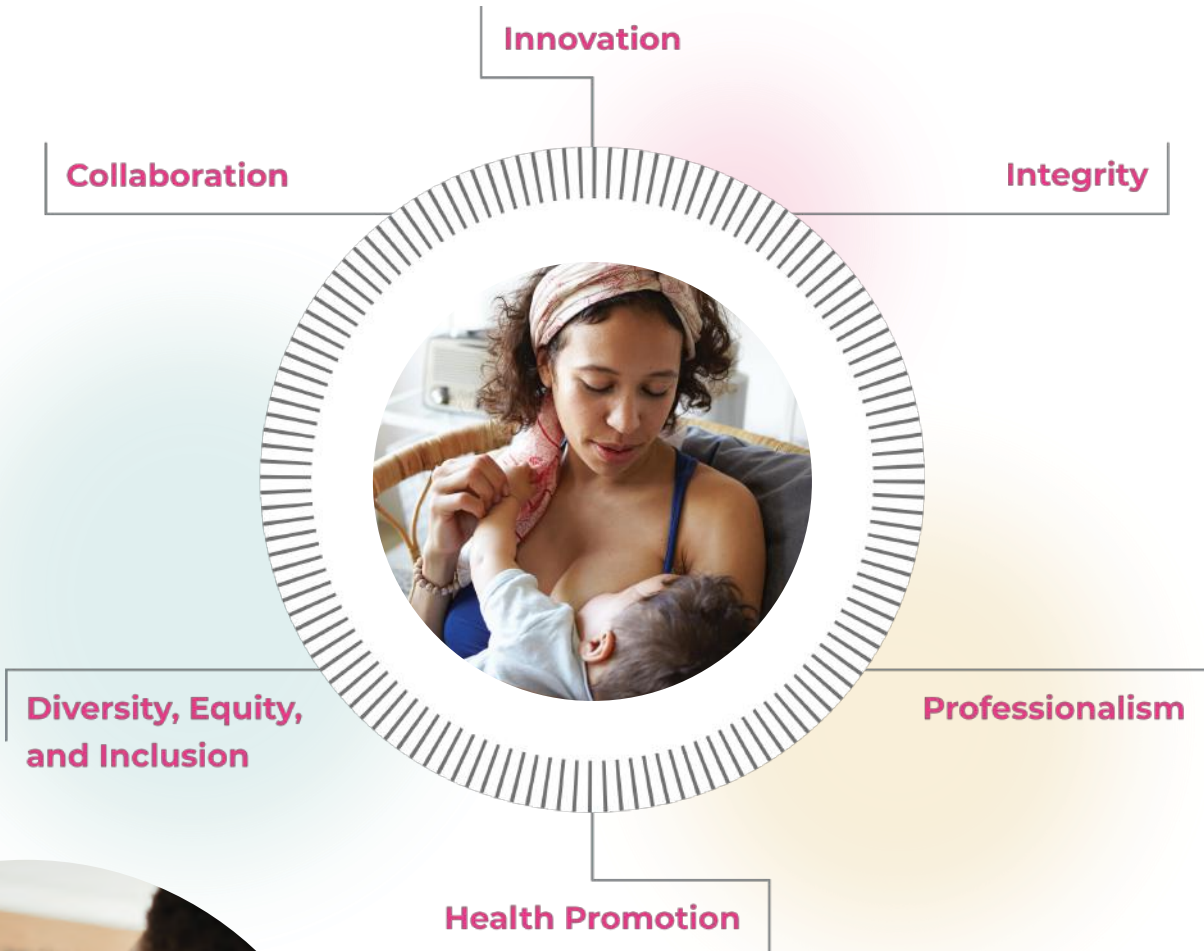
---

**Healthy, strong  
communities for all**





## OUR VALUES



## HELUNA HEALTH OVERVIEW

---

**Heluna Health provides innovative support services and evidence-based programs that improve the overall health and well-being of our communities.**

At Heluna Health, we work directly in local communities and with partner programs to implement and/or evaluate important population health interventions aimed at disease prevention, community preparedness, and achieving health equity. Through innovative programs and transformational partnerships across the population health spectrum, Heluna Health is moving the needle on 'whole person' care and creating a coordinated response to address the underlying conditions that impact the health of our communities.



---

## Heluna Health PARTNERS

**Heluna Health leads and manages public health projects as a comprehensive fiscal sponsor or fiscal intermediary** on behalf of academic researchers, government agencies, nonprofit partners, community-based organizations, and public-private consortia. We provide a range of financial, administrative, and operational support services, including human resources, staffing, payroll & benefits administration, contracts and grants management & monitoring, compliance, IT, and procurement to more than 500 health and social service projects across the United States. Together we are building healthy, strong communities for all.



---

## Heluna Health DIRECT

**Heluna Health works directly in local communities to implement evidence-based, innovative population health programs** that address social, environmental, and economic conditions that affect health equity. We provide essential breastfeeding and nutrition services, early literacy interventions, maternal support, disease prevention, and youth empowerment initiatives to improve health and life outcomes. And Heluna Health delivers project management services that build on decades of expertise in public health and nonprofit administration to enhance community preparedness.





---

# Heluna Health PATHWAYS

**Heluna Health is developing on-demand training and certificate services for key cohorts of the population health/social service workforce,** starting with Community Health Workers (CHWs) in California. The program is designed for CHWs who provide case management, engagement, health coaching, navigation, employment services, and outreach in community-based and social service organizations. The CHW program provides a culturally-responsive curriculum that trains on core competencies. Heluna Health is committed to providing professional pathways for a community-connected health workforce that plays a critical role in advancing health equity.



---

# Heluna Health ADVISORS

**Heluna Health has assembled a diverse team of professional, academic, and lived experts who are passionate about promoting equitable health outcomes.** Our network of public health professionals and affiliated consultants offers decades of experience and trusted relationships working with hundreds of community-based population health and social service organizations. Our team provides expert advice and consultation, technical assistance, and collaborative partnership opportunities to public, private, and non-governmental stakeholders in order to enhance the health, wellness, and resilience of every community we serve.



**BY THE NUMBERS (2020-2021)**

---

**2.7 M**

Connections to service \*

**500+**

Projects

**1,668**

New employees hired

**60%**

Increase in net assets

**10-15%**

Indirect rate for contracts

**100%**

Grant renewal

---

\*Includes data from Heluna Health's WIC program and SisterWeb from 1/1/21-12/31/21, SFHOT, CEIP, and Santa Clara County from 7/1/20-6/30/21.

# Heluna Health Program Spotlights

Learn more about some of our partners and direct service programs working to improve health outcomes in communities







## Rapid Response to Rising COVID-19 Cases in Santa Clara County

Communicable Disease and Diagnostics

Outbreak Preparedness



It was January 31, 2020, and the Santa Clara County Department of Public Health in California had just recorded its first case of COVID-19. Two months later, the county issued one of the nation's first stay-at-home orders to address the rising number of local COVID cases. It was becoming clear to county officials that they would need to mount a rapid response to the escalating crisis. They reached out to Heluna Health for help.

**“Heluna Health’s support was invaluable in helping the county build, train, and lead its 1,000-person COVID-19 contact tracing workforce,” says Sarah L. Rudman, Assistant Public Health Officer with Santa Clara County’s Department of Public Health. “Without Heluna Health, the county could not have achieved this. It was an unprecedented increase in capacity in such a short amount of time.”**

The intensive efforts to scale-up Santa Clara County’s critical pandemic case investigation and contact tracing (CICT) and mobile vaccination response efforts aimed to build a dynamic COVID-19 response workforce. County workers shifted their duties to respond to the pandemic as contact tracers. To supplement this effort, volunteers from the community



were recruited to fill key roles. Heluna Health provided staffing services to support the hiring, onboarding, and training of 800 combined support personnel (Disaster Service Workers, California state employees, and Heluna Health staff) and more than 500 active volunteers, while also delivering technical support, direct supervision, and guidance to the teams.

Altogether, the teams completed more than **91,000 case investigations**, reached over **52,000 individuals** through contact tracing activities, and supported the development and implementation of a multi-level staffing infrastructure to expand and sustain the county's fixed, mobile, and pop-up vaccination operations.

Being on the front lines of pandemic relief in California during COVID-19, Heluna Health has proven that its organizational expertise is a vital resource for local and national efforts around pandemic preparedness. Collective approaches are key, and Heluna Health continues to build integrated and coordinated rapid relief responses that create positive community outcomes.

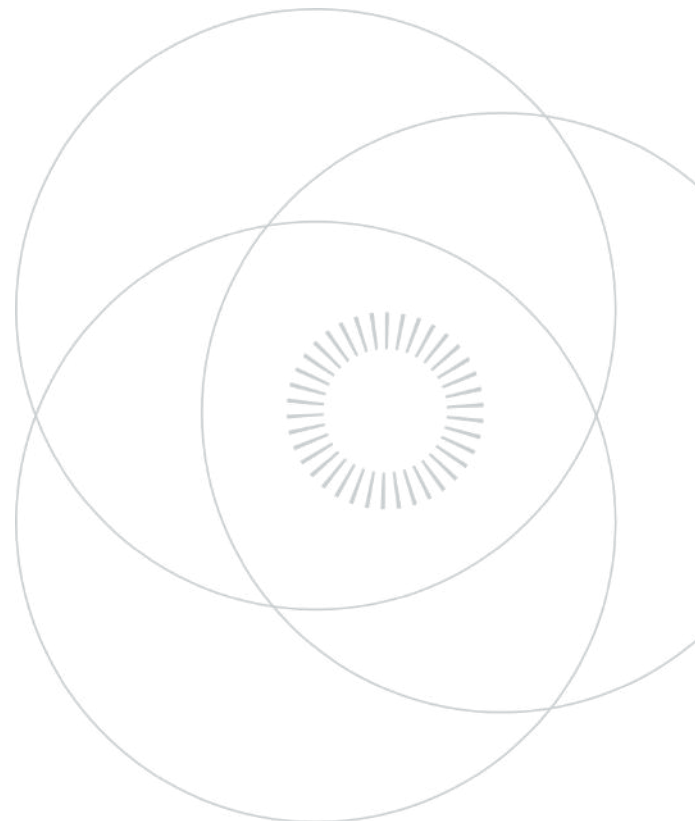
## COVID PREPAREDNESS FOR SANTA CLARA COUNTY IN 2021



**91,000**  
case investigations  
completed



**52,000**  
reached through contact  
tracing activities





## Increase in WIC's Fruits and Vegetables Benefit Builds Nutrition Security for Economically Challenged Families across the U.S.



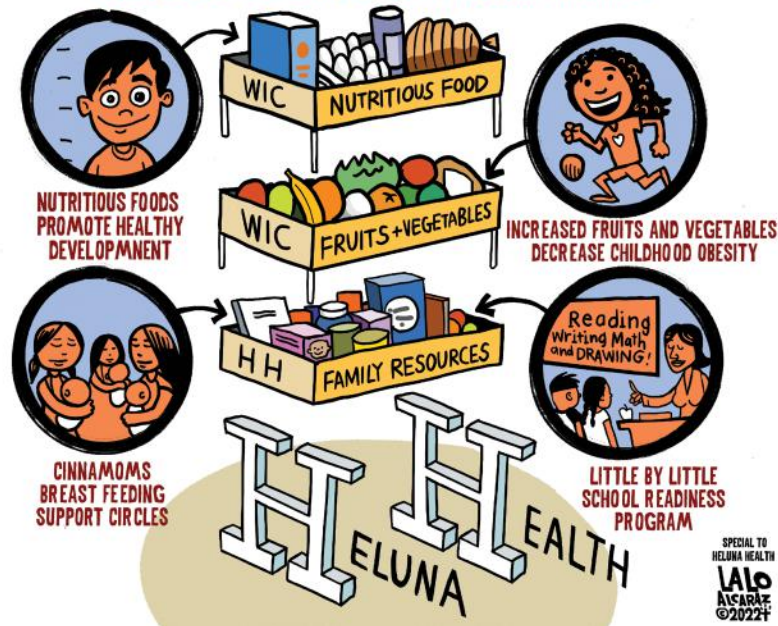
Nutrition

Maternal/Child Health

For more than 40 years, Heluna Health's USDA-funded Women, Infants, and Children (WIC) Program has provided healthy, free food, nutrition education, breastfeeding support, and family resources to economically challenged households with children under age five who are at nutritional risk. Encompassing over 40 sites in Southern California, Heluna Health's WIC Program serves more than 180,000 women, infants, and children every month, translating into approximately 3% of the nation's total and 20% of California's total WIC participants.

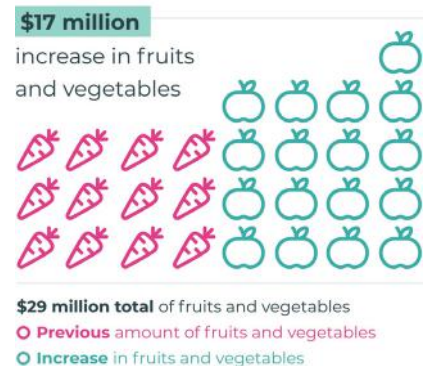
In June 2021, the American Rescue Plan Act significantly raised the WIC monthly benefit for vegetables and fruits, positioning families to make healthier food choices and positively impacting local businesses and farmers. This monthly benefit increase has resulted in **more than triple the amount of fruit and vegetable purchases**, a greater variety of produce redeemed by WIC families, and increased fruit and vegetable consumption by young children. WIC's vegetable and fruit benefit was first introduced in 2009 and is credited with significantly improving the dietary quality of WIC participants' nutrition and reducing the prevalence of childhood obesity among WIC toddlers.

# HELUNA HEALTH SUPPORTS AND ADVANCES HEALTH EQUITY IN MANY WAYS:



Now, there is a bipartisan effort to make the 2021 increase permanent. **“This is not a political issue,”** says **Dr. Shannon Whaley, Director of Research and Evaluation at Heluna Health’s WIC program.** **“Every state grows vegetables and fruits, and every community sells vegetables and fruits. This is good for everyone.”** Dr. Whaley’s current research is focused on the disproportionate impact of nutrition-related inequities on the health and well-being of low-income children and families. A 2019 grant to Heluna Health from the Robert Wood Johnson Foundation Healthy Eating Research division is funding a multi-year study to demonstrate the impact that a significant policy change to provide adequate amounts of fruits and vegetables for young children has on access, intake, food security, and ongoing WIC participation in early childhood. Scheduled to be released in August 2022, the study will inform policy and advocacy work under way to permanently expand this important benefit for all WIC children in the U.S.

## \$143 MILLION IN BENEFITS SPENT ON WIC FOODS IN 2021



## WIC IN 2021

**100,000**

Diapers distributed

**183,000**

Benefits distributed monthly

**108,000**

Books distributed by Little by Little

January 1, 2021 - December 31, 2021





# Advancing Health Equity for the Unhoused in San Francisco



People Experiencing Homelessness

Throughout San Francisco, you can find the exceptional San Francisco Homeless Outreach Team (SFHOT) in their distinctive neon green jackets and shirts, providing hope, humanity, and resources to people experiencing homelessness. SFHOT is a direct service collaboration between Heluna Health and the City and County of San Francisco's Department of Homelessness and Supportive Housing (DHS) that works to engage and stabilize vulnerable unhoused individuals by connecting them with available resources. SFHOT also helps place those experiencing homelessness into temporary shelters and housing.

**“The rewarding part for me is seeing the folks smile and have their needs met,” says Joshcelyn Johnson, a Heluna Health employee for the SFHOT program. “The challenging part is when you see people, especially women with kids, and the folks with mental illness who can’t advocate for themselves.”** SFHOT operates seven days a week, providing street outreach and case management services.

With unparalleled dedication to the unhoused community of San Francisco, the Outreach Team provides practical support, information, referrals, and in-depth community



collaboration and responsiveness. From July 2020 through March 2021, SFHOT's team provided services to **2,778 unique clients**, more than doubling its client target of 1,125. Case management services address the numerous long-term problems related to homelessness, connects individuals to public benefits, and develops pathways for housing.

SFHOT's "street medicine" outreach service provides healthcare to clients to monitor and improve the health of those without permanent shelter. These critical services help advance health equity by improving health outcomes, and reflect Heluna Health's commitment to promote health, safety, and well-being for any individuals experiencing homelessness in San Francisco.

### SFHOT STREET OUTREACH



- 64,635 COVID-19 wellness checks completed
- 28,421 hygiene items distributed
- 2,762 referrals to medical providers

### SFHOT CASE MANAGEMENT



Fiscal Year 2021  
\* Includes Community Response, Street Outreach, and Special Projects





# Tracking a Public Health Emergency Case by Case

Communicable Disease and Diagnostics

Emerging Infections



The California Emerging Infections Program (CEIP) is funded by the U.S. Centers for Disease Control and Prevention (CDC) for the surveillance, prevention, and control of emerging infectious diseases. In March 2020, CEIP began collecting COVID data just three weeks after the pandemic was declared a public health emergency. “We’ve never done that before,” says Gretchen Rothrock, Associate Director at CEIP. “But without the basic information about how much disease is out there, we can’t determine whether things are getting better or worse, or which people need the most help.” The work of CEIP has been published in the CDC’s *Morbidity and Mortality Weekly Report (MMWR)*.

**As the fiscal sponsor of CEIP, Heluna Health has assisted the organization with administrative optimization since 1994, and provided support with hiring, benefits administration, and equipment, to make possible CEIP’s timely response during the pandemic.**

CEIP tracked **14,070 COVID-positive hospitalizations** in San Francisco, Alameda, and Contra Costa counties through June 30, 2021. CEIP also interviewed **1,541 COVID-positive healthcare workers** and evaluated vaccine effectiveness among those workers. Additional studies monitored emerging COVID variants and described the characteristics of the illness experienced by healthcare workers who tested positive.

Going forward, researchers and policymakers will now be able to use CEIP's data to better prepare for the future. And Heluna Health, with its partners, will continue to develop new and innovative approaches to pandemic preparedness that are driven by data, such as the creation of new tools that can help to better understand gaps in preparedness, foster community engagement, and focus outreach in higher-risk communities.

## IN ONE YEAR, CEIP SURVEILLANCE INCLUDED



### Fighting COVID

**64,635** COVID-19 wellness checks completed

**14,070** COVID-positive hospitalizations tracked

**1,541** COVID-positive healthcare workers interviewed and monitored



**609**

Active Bacterial Core surveillance (ABCs) cases



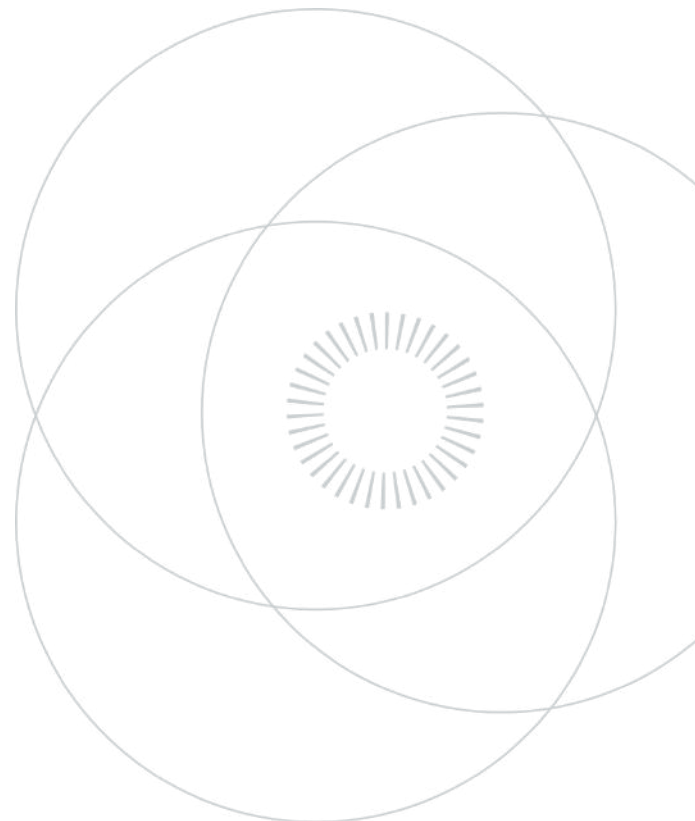
**1,334**

Foodborne Diseases Active Surveillance Network (FoodNet) cases



**3,497**

Healthcare-Associated Infections







## Increased Access to Doulas Provides Positive Birth Experiences



Doula Services

Maternal/Child Health

For the doulas employed by San Francisco’s SisterWeb, the house in the Bayview neighborhood that serves as the community based organization’s headquarters is more than just “the cottage,” as it is affectionately known—it is the center of a movement to change the lives of Black, Latinx, and Pacific Islander families across the city.

Research shows that the families served by SisterWeb’s doulas and birth workers are at a higher risk for adverse birth outcomes, including preterm deliveries, pregnancy complications, and inadequate prenatal care, because of systemic race-related inequities. Black women in the U.S. are four times as likely to die in the process of giving birth than white women. In San Francisco, one out of every seven Black children is born prematurely. These very tragic outcomes are highly preventable and SisterWeb is determined to increase access to doula services for Black, Latinx, and Pacific Islander families to ensure they receive the support, protection, and resources for a positive birth experience.

**As Marna Armstead, the Executive Director and cofounder of SisterWeb, explains, “The communities that have a need for doula services are the same Black and Brown communities that can’t afford them.”** This is where SisterWeb makes a difference. By



providing free, culturally congruent doula care, SisterWeb ensures that its clients receive fair and equitable medical care and feel informed and empowered during their birth journeys. It is the only community based organization in San Francisco to offer this model of doula care and, in doing so, is providing stable employment opportunities for Black, Latinx, and Pacific Islander doulas. Says Armstead, as the group’s fiscal sponsor, Heluna Health “not only supports our financial stability, but through that, the stability of the people who work for us. We employ our doulas full time, so they have a viable profession.”

Within just a few years, SisterWeb has grown from a tiny dream into a transformational doula organization serving hundreds of women each year. Through advocacy and outreach, its message is reaching more families. For Armstead, that message is clear. “We already have solutions, and we need to be able to practice them openly so that every baby has an equal chance at a healthy start,” she says.

## SISTERWEB IN 2021

**539**

prenatal or postpartum appointments attended

**81**

Group Mentorship sessions held

**93%**

SisterWeb clients initiated breastfeeding at birth

**30.2**

hours on average clients spent with their doula

**49**

Champion Dyad meetings held, collaborating with hospitals to integrate doulas into labor and delivery teams

**9/10**

rating of trust that SisterWeb doulas had in their doula partners to fill in for them and offer support when needed



**97% of SisterWeb clients** reported that their doulas helped them **feel more confident** navigating healthcare systems and understanding their rights and options

**SisterWeb doulas** rated **feeling supported and encouraged** by their mentors as “9.5 out of 10”

The data represent outcomes from Jan 1 - Dec 31, 2021. Data for clients who had a portion or all of their care during this time period were included in these figures.

# A COVID-19 Timeline

As the 2020-2021 fiscal year began, Heluna Health continued to mobilize essential resources for our communities to confront the challenges caused by the global pandemic. We worked collaboratively across our broad network of partners, clients, and programs to respond rapidly to the urgent situation threatening lives while continuing to deliver essential breastfeeding and nutrition services, early literacy programs, maternal support, disease prevention programs, and other initiatives. Here's a closer look at our impact on the health and well-being of our communities.

## OUR PANDEMIC RESPONSE

### January 2020

First case of COVID-19 reported in the U.S.

### March 2020

**Heluna Health** begins providing emergency response staffing and launches a COVID-19 Response Fund, raising over one million dollars.

### April 2020

**Heluna Health** provides emergency response staffing for Los Angeles County and supports statewide laboratory capacity for pandemic response. Heluna Health's WIC program staff provides remote services.

### November 2020

**Heluna Health** begins staffing support for Project Room Key in LA County, providing shelter-in-place housing for individuals experiencing homelessness during the pandemic.

### December 2020

FDA issues emergency use authorizations for Pfizer BioNTech and Moderna vaccines.

### December 2020

**Heluna Health** partners with the state of California to help deploy COVID-19 vaccinations.

### April-June 2021

**Heluna Health** partners with California and LA County to support school-based testing programs and partners with the California Prevention Training Center to train a large and diverse public health workforce on pandemic response.

### July 2021

**Heluna Health** supports LA County as it implements mobile vaccination sites and PODs.



#### May 2020

California increases availability of testing.

#### May-June 2020

**Heluna Health** partners with FluLab to provide testing, PPE, and other support to people in need. Heluna Health also onboards staff and volunteers to support case investigation and contact tracing in Santa Clara County and provides staffing support for LA County COVID testing sites.

#### September 2020

**Heluna Health** provides staffing support to Contra Costa County and the California Department of Public Health for continued pandemic response efforts.

#### January 2021

**Heluna Health** partners with the Biden Inaugural Committee's National Day of Service in honor of Martin Luther King Jr. Day to launch its #WhyIVax campaign and supports LA County's emergency response efforts with support hiring EMTs and paramedics.

#### February 2021

**Heluna Health** supports Santa Clara County's transition to vaccination operations as vaccine eligibility broadens.

#### March 2021

California Governor Gavin Newsom signs AB 86, providing funding to support the safe reopening of K-12 schools.

#### July 2021

The pandemic continues and Heluna Health's work remains essential and is ongoing.



---

# The Heluna Health Community

“The greatness of a community is most accurately measured by the compassionate actions of its members.”

Coretta Scott King

Heluna Health effects positive change in population health because of critical support from our dedicated universe of key stakeholders. From our partners and direct service programs to generous individuals, corporations, foundations, and government agencies to our board members and other leaders, our success as an organization is a team effort.



---

## Chairman of the Board

Alexander Baker, MBA  
Chief Operating Officer, JSI

“This has been an invigorating time for Heluna Health, as the mission of the organization has never been more important. When so many communities have faced enormous health crises, Heluna Health and our many partners have stepped up and positively impacted the lives of some of the most vulnerable people in the U.S. We were ready for this moment and we were able to nimbly respond to the urgent needs thrust upon population health organizations. On behalf of the Heluna Health Board of Directors and Executive Management Team, I extend our gratitude to our family of supporters who make this work possible. We have much more to accomplish; we invite you to join our work in advancing health equity and helping the communities we serve strengthen their capacity to prepare for and respond to future public health challenges.”

## PARTNERS AND DIRECT SERVICE PROGRAMS

At Heluna Health, we work directly in local communities and with our partners to provide proven population health interventions.



### 4 Bone Health

Action on Smoking and Health (ASH)

Alameda County (AC)

Alameda County Health Care Services Agency

Alameda County Public Health Department

Alameda County Public Health Laboratory

California Department of  
Public Health (CDPH)

CDPH Center for Family Health (CFH)

CDPH California Emerging Infections Program (CEIP)

CDPH California STD/HIV Prevention  
Training Center (CAPTC)

CDPH California Youth Advocacy Network (CYAN)

CDPH Infant Botulism Treatment and  
Prevention Program (IBTPP)

CDPH Infectious Disease Branch (IDB)

CDPH Microbial Diseases Laboratory (MDL)

CDPH Vector Borne Disease Section (VBDS)

CDPH Viral and Rickettsial Disease Laboratory (VRDL)

CDPH- Saving Our Legacy (SOL) Project

Carolyn Kordich Family Resource Center

Cell-Ed

Children and Families Commission  
of Orange County

Closed Eyes Open Heart

CMV Workshop Fund

Community Translational  
Research Institute (CTRI)

### Contra Costa County

Contra Costa Health Services (CCHS)

CCHS Behavioral Health Division

CCHS Public Health Division

CCHS Senior Nutrition Program (Meals on Wheels)

Cycle for Heart and Climb for Heart

Eastern Los Angeles Family Resource Center

Family Resource Centers  
Network of California

Health Consortium of Greater  
San Gabriel Valley

Health Officers Association  
of California (HOAC)

Long Beach Early Childhood  
Education Committee

### Los Angeles County (LAC)

Community Health Project LA (CHPLA)  
- Syringe Service Program

Immunization Coalition of Los Angeles County (ICLAC)

LAC Department of Health Services  
(LACDHS) - USC Healthcare Network

Los Angeles Network for Enhanced Services (LANES)

Los Angeles Partnership for  
Special Needs Children

Orange County Department  
of Education (OCDE)

Rancho Santiago Community  
College District (RSCCD)

RTI International

San Francisco Department of Public Health (SFDPH)

- SFDPH Applied Research, Community Health Epidemiology, and Surveillance (ARCHES)
- SFDPH Bridge HIV
- SFDPH Center for Learning and Innovation (CLI)
- SFDPH Center for Public Health Research (CPHR)
- SFDPH Community Health Equity and Promotion (CHEP)
- SFDPH Disease Prevention and Control (DPC)
- SFDPH Public Health Emergency Preparedness and Response (PHEPR)

San Francisco Department of Homelessness and Supportive Housing (SFHSH)

San Francisco Financial Justice Project

San Francisco Health Network (SFHN)

- SFHN Ambulatory Care
- SFHN Behavioral Health Services
- SFHN Jail Health
- SFHN Maternal, Child & Adolescent Health

Shoreline Center for Eating Disorder Treatment

SisterWeb

Southern CA Crossroads

Sustain Hawaii

TRAPMedicine

Violence Prevention Coalition of Orange County

Wilson High School Alumni Foundation



Angels Childcare Food Program

CinnaMoms

HIV/AIDS Transitional Case Management (TCM) - LAC Jail System Program

Little by Little School Readiness Program

PHFE WIC

Red Alert Baby

San Francisco Homeless Outreach Team (SFHOT)

San Mateo County Outbreak Response & Emergency Preparedness

Santa Clara County Outbreak Response & Emergency Preparedness

Youth Development Services (YDS)





## INVESTING IN HEALTH EQUITY

---

Thank you to the numerous individuals, foundations, corporations, and government agencies whose critical support enables Heluna Health and our partners to build healthy, strong communities for all. Gifts, grants, and contracts of \$1,000 or more for the time period July 1, 2020 – June 30, 2021 are recognized in the Impact Report.

Adamma Foundation	Boehringer Ingelheim International GmbH	Cicatelli Associates, Inc
Altarum Institute	Brilliant Corners	City and County of San Francisco
Amazon	Bristol-Myers Squibb	Office of Contract Administration Purchasing Division
American Foundation for Suicide Prevention	Italo Brown	San Francisco Department of Homelessness and Supportive Housing
American Heart Association	California Community Foundation	San Francisco Department of Public Health
Angeles Community Health Center	California Department of Developmental Services	City of Hope
Anonymous (5)	California Department of Education	City of Los Angeles
Anthem Blue Cross	California Department of Public Health	Columbia University
Marna Armstead	California Family Resource Association	Community Clinic Association of Los Angeles County
Arthur J. Gallagher & Co.	California HIV/AIDS Research Program	Corixa Corporation
Association of Maternal and Child Health Programs	California Physicians' Service Blue Shield of California	Corona-Norco Unified School District
Association Of Public Health Laboratories	Care Transformation Collaborative Rhode Island	County of Contra Costa
Association of States and Territorial Health Officials	Andrew Casteel	County of Los Angeles
AT&T Foundation	Cause Communications	County of Marin SELPA
Aurrera Health Group, LLC	CDC Foundation	County of Orange
Alexander Baker	Children & Families Commission of Orange County	County of San Mateo
Bank of the West	Children's Hospital Los Angeles	County of Santa Clara
Battery Foundation	Chipotle Mexican Grill Inc.	Crankstart
Dawn Noelle Smith Beutler		Curtis Family Charitable Fund
Black to the Future		Blayne Cutler
Blue Cross Blue Shield		Susan De Santi
Blue Shield of California Foundation		Dermira

Dollar General Literacy Foundation	ICON Government and Public Health Solutions, Inc (CRO)	National 4-H Council
East Valley Community Health Center	Inland Southern California United Way	National Alliance of Healthcare Purchaser Coalitions
El Nido Family Centers	Institute for Healthcare Improvement	National Association of County & City Health Officials (NACCHO)
Emanate Health	Japanese Community Youth Council	National Health Foundation
Every Mother Counts	Kaiser Foundation Hospitals	National Philanthropic Trust
Family Health International	Kaiser Permanente Foundation	Von Nguyen
Fannie E. Rippel Foundation	Keller Family Fund	Michael Nuttall
Loren R. Farese	Kirkland and Ellis LLP	Office of National Coordinator for HIT
Fidelity	Stephanie Lane	Open Society Foundations
First 5 Los Angeles	Alex Lantsberg	Oregon Health & Science University
First 5 San Francisco	Laura and John Arnold Foundation	Patient-Centered Outcomes Research Institute
Flu Lab, LLC	Leavitt Partners, LLC	Pfizer
Fred Hutchinson Cancer Research Center	LEO Pharma	Pomona Community Health Center
Friedman Family Foundation	Liberty Hill Foundation	Pomona Valley Hospital Medical Center
Galderma International S.A.S.	Mac AIDS Fund	Public Health Institute
GARDP Foundation	Nicole Macarchuk	Erik and Ranesh Ramanathan
Genentech	Magee-Women's Research Institute and Foundation	Rancho Santiago Community College
George Kaiser Family Foundation	Marathon Petroleum Corporation	RAND Corporation
Gilead Sciences, Inc.	Margaret Martinez	Reaching Our Sisters Everywhere
Golden Gate Mothers Group	Shane McGraw	Rhode Island Department of Health
Harm Reduction Coalition	Medical University of South Carolina	Michelle Lee Rich
Health Care Agency	Merck Sharp & Dohme Corp	Sarah and Jimmy Rich
Health Net	Methodist Healthcare Ministries of South Texas, Inc.	Robert Wood Johnson Foundation
Health Officers Association of California	Mission Neighborhood Health Center	Roche
Health Resources and Services Administration	NASEN dba Dave Purchase Project	
Hellman Foundation		
Hopewell Fund		
Jeanne Huey		
Huntington Hospital		

Michael Rolig	The Nonprofit Partnership	USDHHS - Food and Drug Administration
RTI International	The Regents of the University of California	USDHHS - National Institutes of Health
Rudolf Steiner Foundation	Regents of the University of California-Berkeley	USDHHS - Substance Abuse and Mental Health Services Administration
San Francisco AIDS Foundation	Regents of the University of California-Davis	U.S. Department of Housing and Urban Development
San Francisco General Hospital Foundation	Regents of the University of California-Los Angeles	U.S. Department of the Interior- National Park Service
San Francisco Health Plan	Regents of the University of California-San Francisco	U.S. Department of the Treasury
San Francisco Public Health Foundation	The San Francisco Foundation	UniHealth Foundation
Sanofi Genzyme	The Thomas R. and Deborah A. Davidson Foundation	United Way of Greater Los Angeles
Sierra Health Foundation	The University of Kansas	Vivian Vasallo
Silicon Valley Community Foundation	The University of North Carolina	Santosh Vetticaden
Davida Silverman	Tipping Point	ViiV Healthcare UK
Social & Scientific Systems, Inc.	Tulane University	Violet World Foundation
SPUR	Tulsa City-County Health Department	Walter and Elise Haas Fund
State of California	Tulsa County	Well Being Trust
State of Delaware- Department of Health and Social Services	Tulsa Community Foundation	Wells Fargo
State of New Mexico	U.S. Agency for International Development	Westat
Somava Stout	U.S. Department of Agriculture	Eric Whitney
Support for Families of Children with Disabilities	USDA - Food and Nutrition Service	Drew Wilson
The Children's Partnership	U.S. Department of Education	WK Kellogg Foundation
The Comer Foundation	U.S. Department of Health and Human Services	Linda Yeomans
The Council of State Governments Ltd	USDHHS - Administration For Children & Families	Edward Yip
The David and Lucile Packard Foundation	USDHHS - Administration for Community Living	
The Forbes Funds	USDHHS - Centers for Disease Control	
The George Washington University	USDHHS - Centers for Medicare & Medicaid Services	
The James N. Cost Foundation		



**LEADERSHIP AND GOVERNANCE**

---

Heluna Health’s accomplished board of directors and experienced executives work collaboratively to uplift our partners and direct programs, and to improve health outcomes in our communities.

**Executive Management Team**



**Blayne Cutler, MD, PhD**  
President and Chief Executive Officer



**Jordan Gadd, MA**  
Chief of Staff



**Brian Gieseler, MBA**  
Chief Financial Officer



**Kiran Saluja, MPH, RDN**  
Executive Director, PHFE WIC Program



**Peter Dale, CPCM, MA**  
Chief Program Officer



**Jo Kay Ghosh, PhD**  
Director of Research and Evaluation



**Elizabeth Power Robison, MBA**  
Chief Advancement Officer



**Tim Seifert, JD**  
Chief Human Resources Officer

## Board of Directors



**Alexander Baker, MBA**

Board Chair  
Chief Operating Officer, JSI



**Von Nguyen, MD, MPH**

Vice Chair  
Clinical Lead for Population Health, Google LLC



**Robert R. Jenks, MBA**

Treasurer  
Managing Director, Redbrook Partners LLC



**Tamara Joseph, JD**

Secretary  
Chief Legal Officer, Spero Therapeutics



**Georgia Casciato, FACHE**

Director  
Consultant, Healthcare



**Susan De Santi, PhD**

Director  
Executive Director, Global Medical Affairs, Patient Journey, Neurology Business Group, Eisai, Inc.



**Carladenise Edwards, PhD**

Director  
Executive Vice President, Chief Strategy Officer, Henry Ford Health System



**Scott Filer, MPH, MBA**

Director  
CEO, ProMedix, Inc.



**Celina Gorre**

Director  
CEO, WomenHeart



**Nicole J. Macarchuk, JD**

Director  
Partner, Dechert, LLP



**Bonnie Midura, MPH**

Director  
Senior Program Manager, The California Endowment



**Sarah Mullen Rich, MBA**

Director  
Consultant, Healthcare Finance



**Jean C. O'Connor, JD, MPH, DrPH, FACHE**

Director  
Principal Associate, Abt Associates



**Vivian Vasallo**

Director  
Executive Director, Delta Dental Institute



**Santosh Vetticaden, MD, PhD, MBA**

Director  
Biotech Entrepreneur/ Co-founder, Visgenx Inc.



**Edward Yip, JD**

Director  
Vice President, Legal and Compliance, Euclid Systems Corporation

# Financials

Fiscal year 2020 - 2021 began amid the ongoing COVID-19 pandemic, which continued to have a significant impact on our programs and partners. Total fiscal year 2021 support and revenues reached \$608.0 million. The total expenses for fiscal year 2021 were \$602.9 million. In addition, Heluna Health's total net assets grew to a new high of \$14.4 million—up from \$9.3 million the prior year—as a result of disciplined fiscal management.

## Statements of Activities

June 30, 2021 and 2020

Unrestricted Revenues and Support	2021	2020
Governmental service contracts	\$ 582,228,221	\$ 119,912,066
Management fees	\$ 19,455,027	\$ 13,318,592
Private Contracts	\$ 6,135,147	\$ 3,179,312
Other Income	\$ 195,288	\$ 1,456,000
<b>Total unrestricted revenues and support</b>	<b>\$ 608,013,683</b>	<b>\$ 137,865,970</b>

Expenses	2021	2020
Program Services	\$ 586,124,657	\$ 122,670,491
Support Services	\$ 16,774,406	\$ 14,032,275
<b>Total Expenses</b>	<b>\$ 602,899,063</b>	<b>\$ 136,702,766</b>

<b>Change in net assets - unrestricted</b>	<b>\$ 5,114,620</b>	<b>\$ 1,163,204</b>
Net assets - beginning of the year	\$ 9,325,060	\$ 8,161,856
Net assets - end of the year	\$ 14,439,680	\$ 9,325,060

## Statement of Functional Expenses

### Program Services 2021



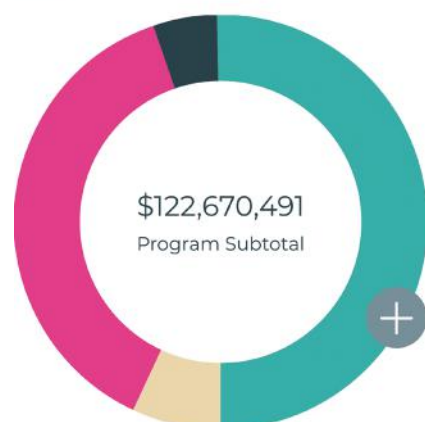


# Statements of Financial Position

June 30, 2021 and 2020

Assets	2021	2020
Cash and cash equivalents	\$ 8,402,307	\$ 15,430,522
Contracts receivable, net of allowance for doubtful accounts of \$9,595 and \$41,712, respectively	\$ 64,034,004	\$ 19,073,473
Advances to programs, prepaid expenses, and other	\$ 129,578,804	\$ 2,464,497
Property and equipment, net	\$ 3,802,206	\$ 2,877,934
<b>Total Assets</b>	<b>\$ 205,817,321</b>	<b>\$ 39,846,426</b>
Liabilities	2021	2020
Accounts Payable and accrued expenses	\$ 31,849,302	\$ 6,435,019
Accrued payroll and related liabilities	\$ 15,244,463	\$ 9,152,843
Agency and other funds payable	\$ 10,295,125	\$ 8,697,862
Advance on grantor payments	\$ 3,153,570	\$ 3,262,932
Accountability for program assets	\$ 3,489,870	\$ 2,612,387
Deferred rent	-	\$ 38,680
Deferred revenue	\$ 127,326,336	\$ 293,077
Capital lease obligations	\$ 18,975	\$ 28,566
<b>Total Liabilities</b>	<b>\$ 191,377,641</b>	<b>\$ 30,521,366</b>
Net Assets-Unrestricted	\$ 14,439,680	\$ 9,046,634
Net Assets-With Restrictions	-	\$ 278,426
<b>Total Net Assets</b>	<b>\$ 14,439,680</b>	<b>\$ 9,325,060</b>
<b>Total Liabilities and Net Assets</b>	<b>\$ 205,817,321</b>	<b>\$ 39,846,426</b>

## Program Services 2020



**\$61,567,873**  
All Other Programs

**\$8,781,662**  
Epidemiology and Laboratory  
Capacity for Infectious Diseases

**\$14,032,275**  
**Management and General**

**\$46,251,280**  
Women, Infants, and Children  
Supplemental Nutrition Program

**\$6,069,676**  
San Francisco Homeless Outreach  
Team (SFHOT)

**\$136,702,766**  
**Total Functional Expenses**

**“I alone cannot change the world,  
but I can cast a stone across the  
waters to create many ripples.”**

**Mother Teresa**

## **CONNECT**

---

For more than 50 years, Heluna Health and the hundreds of population health initiatives we support each year have helped individuals achieve their full potential. We have measurably advanced health equity with innovative strategies and evidence-based solutions, and equipped our partners with capacity building services to improve the health, wellness, and resilience of every community we serve.

Too often, health disparities exist because of circumstances that community members do not control—circumstances such as limited educational opportunities, higher levels of air pollution, systemic racism, poverty, or other social injustices. In fact, research has shown that the zip code in which you are born matters just as much to your physical health, if not more, than your genes.

The COVID-19 pandemic revealed and worsened health disparities, and Heluna Health seeks to scale solutions that eliminate or significantly reduce such gaps in our care for each other. With our long history of supporting partners in outbreak preparedness and response, Heluna Health is well positioned to assist communities in becoming more proactive, so that they never find themselves caught off guard by a novel virus or another pandemic again.

We welcome the opportunity to partner with the wider public health, social service, and philanthropic communities to reduce health disparities and strengthen readiness and resilience in the face of such population health challenges.

**We hope you will join us.**

More information and a digital version of this report are available at [helunahealth.org](https://helunahealth.org)







#### HEADQUARTERS

13300 Crossroads Pkwy North  
Suite 450  
City of Industry, CA 91746  
(800) 201-7320  
[hello@helunahealth.org](mailto:hello@helunahealth.org)

#### WIC ADMINISTRATION

12781 Schabarum Avenue  
Irwindale, CA 91706  
(888) 942-2229

#### OAKLAND OFFICE

300 Frank H. Ogawa Plaza  
Oakland, CA 94612

[helunahealth.org](http://helunahealth.org)

**Heluna Health**<sup>®</sup>